

# ***MOTOR TESTING***

## ***APPLICATION GUIDE***

[www.haefely-hipotronics.com](http://www.haefely-hipotronics.com)





## MOTOR TEST SYSTEMS

HAEFELY HIPOTRONICS is the world's leading supplier of quality AC and DC motor testing equipment to motor manufacturers, motor repair shops, and industrial plant maintenance programs since 1962. Our 100+ years of combined experience have enabled us to develop the most reliable and efficient test systems on the market today.

All of our manufacturing is done in-house to provide the highest level of quality. Our standardized designs, patented Peschel Variable Transformer (PVT), and rugged motorized tap switch allow for years of operation with minimal maintenance.

Our Motor Test Systems come with a 10-inch (25cm) color touchscreen controller with intuitive menu functions.

A standard digital tachometer and wattmeter allow for conveniently displayed measurements on the controller interface as well as temperature and power factor metering.

Fast and easy test reports can be generated using our new data acquisition software on any computer.

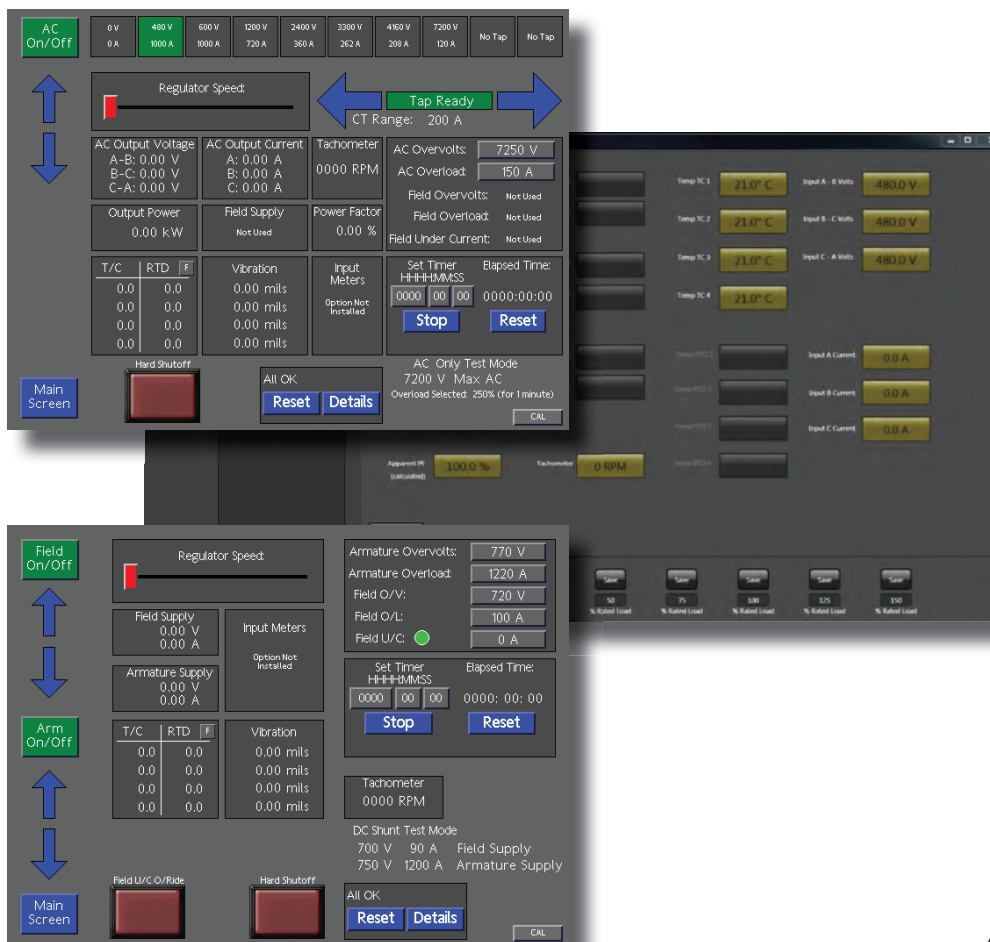
### FEATURES

- **Measurement devices are included** with all models: (1) Digital Tachometer; (2) Digital Wattmeter; (3) Temperature Meter (Type - E); (4) Power Factor Meter
- **Emergency OFF switch** and **warning lamp**
- **External interlock provisions**
- **Motorized tap selector switch** to decrease start-up time
- **Primary overload protection**
- **Interlocked HV taps** for maximum safety
- **Lifting provisions** (crane and forklift)
- Export **all test data** to .CSV

### BENEFITS

- Variable transformer offers the most **stable output** available
- **Continuously variable voltage** from near zero to full voltage
- **Complete metering** to verify conditions of motor under test
- **Decreased start-up cost** with minimal mains wiring required
- **Latest technology** with motorized tap switch to ensure reliability and accuracy
- Touchscreen PLC controls allows for **minimal user training**
- **Smaller footprint** with patented PVT design

# NEW DATA ACQUISITION SOFTWARE



## WHAT'S NEW?

Our newly-redesigned Motor Test Systems, based on years of collaboration with our customers, are ready to ship with upgraded control and data acquisition software.

- Intuitive interface
- Touchscreen PLC controls
- Simple mode selection
- Ease of operation







## PRODUCT OVERVIEW

HAEFELY HIPOTRONICS' low and high power Motor Test Systems are designed to meet all of your testing requirements. The MTS Series, used to perform tests at no-load or full-load operation, have been supplied all over the world.

Electric motor testing can tell you a lot about the condition of a motor's electrical makeup and mechanical integrity. Different test parameters have been established for Manufacturers, Motor Repair Shops, and Off-Line In-Service Testing to ensure the proper performance and operating efficiency.

◆ Included      ❖ Optional      ▲ Not available

System kVA Ratings (MTA & MTC)

(up to)	150	300	500	750	1000	1500	2000
240V	◆	▲	▲	▲	▲	▲	▲
480V	◆	◆	◆	◆	◆	▲	▲
600V							
1200V	◆	◆	◆	◆	◆	◆	◆
2400V							
3300V	▲	◆	◆	◆	◆	◆	◆
4160V							
7200V	▲	❖	❖	❖	❖	◆	◆
11000V	▲	▲	❖	❖	❖	❖	❖
13800V							

### OUTPUT VOLTAGES

Near 0V...13,800V (availability dependent on system)

### INPUT VOLTAGES

150kVA...1500kVA	380 / 400 / 415 V AC, 50 Hz, 3p 440 / 480 / 600 V AC, 60 Hz, 3p 3300 / 4160 / 6600 V AC, 50 / 60 Hz, 3p
2000kVA	3300 / 4160 / 6600 V AC, 50 / 60 Hz, 3p

		MTA-150	MTA-300	MTA-500	MTA-750	MTA-1000	MTA-1500	MTA-2000
	(up to)							
AC Testing	150 HP / 110 kW	●	●	●	●	●	●	●
	300 HP / 220 kW	○	●	●	●	●	●	●
	500 HP / 370 kW	○	○	●	●	●	●	●
	750 HP / 550 kW	○	○	○	●	●	●	●
	1000 HP / 740 kW		○	○	○	●	●	●
	1500 HP / 1100 kW		○	○	○	○	●	●
	2000 HP / 1490 kW			○	○	○	○	●
	2500 HP / 1865 kW			○	○	○	○	○
	3750 HP / 2795 kW				○	○	○	○
	5000 HP / 3730 kW					○	○	○
	7500 HP / 5595 kW						○	○
	10000 HP / 7460 kW							○

MTC includes all MTA features plus those listed below.\*

		MTA-150	MTA-300	MTA-500	MTA-750	MTA-1000	MTA-1500	MTA-2000
	(up to)							
DC Testing	ARMATURE SUPPLY	650V	200A	■	■	■	■	■
			425A		■	■	■	■
			625A		■	■	■	■
	750V		900A		■	■	■	■
			1200A			■	■	
			1500A				■	
FIELD SUPPLY	300V	10A	■	■	■	■	■	■
	700V	90A		■	■	■	■	■

- AC Full-Load and No-Load Test Capabilities
- AC No-Load Test Capability

- DC Test Capability

Full-Load and No-Load calculations are approximate and could vary with your specific application. For Motor Test Systems with AC output only, DC specs are eliminated.

**The model prefix MTC applies to systems with both AC and DC testing capabilities.\***

**For Motor Test Systems with AC capabilities only, the model prefix is MTA.\***

Larger and smaller units and other input voltages may be available upon request.

For complete specifications for a particular model, please contact Hipotronics at 845-230-9245.

## PREMIUM HARDWARE

### PESCHEL VARIABLE TRANSFORMER (PVT)

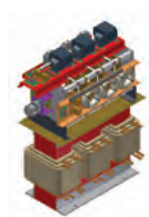
Over 25 years ago, Hipotronics, Inc. designed and patented the Peschel Variable Transformer (PVT) specifically for high power applications. The PVT is still the best solution for economical, uncomplicated, high power variable voltage requirements. The PVT has been put to the test in a wide range of applications and has proven itself to be the best method to achieve a high power variable voltage output, while maintaining a clean sinusoidal wave shape.



### MULTI-TAP TRANSFORMER & MOTORIZED TAP SWITCH

The main transformer and tap switch are used to output three-phase AC voltage. Operators can easily select their desired tap from visual graphics displayed on the touchscreen. When the DC armature mode is selected, the AC output tap switch defaults to zero (ground).

If a tap change is made while the supply is energized, the voltage automatically ramps down to zero; then the tap changes. The AC or DC armature cannot be energized until the associated tap ready indicators are illuminated.



INCREASED  
TEST CAPABILITY

REWRITTEN CONTROL  
& DATA ACQUISITION  
SOFTWARE

FAST TURNAROUND

EASY EXPORT  
OF DATA TO .CSV

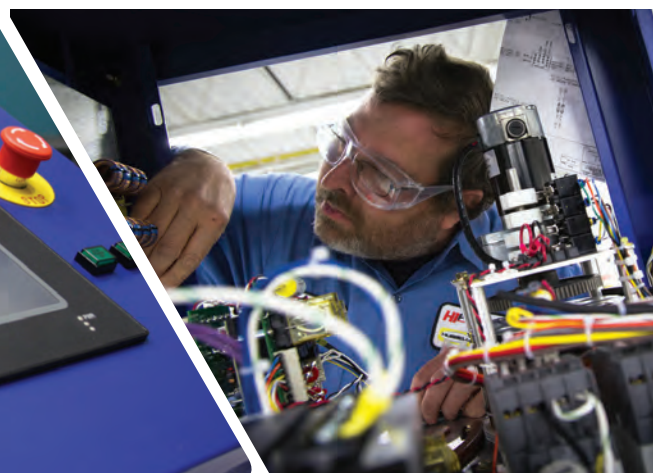
CLEAN AND  
MODERN LOOK

## OPTIONAL EQUIPMENT

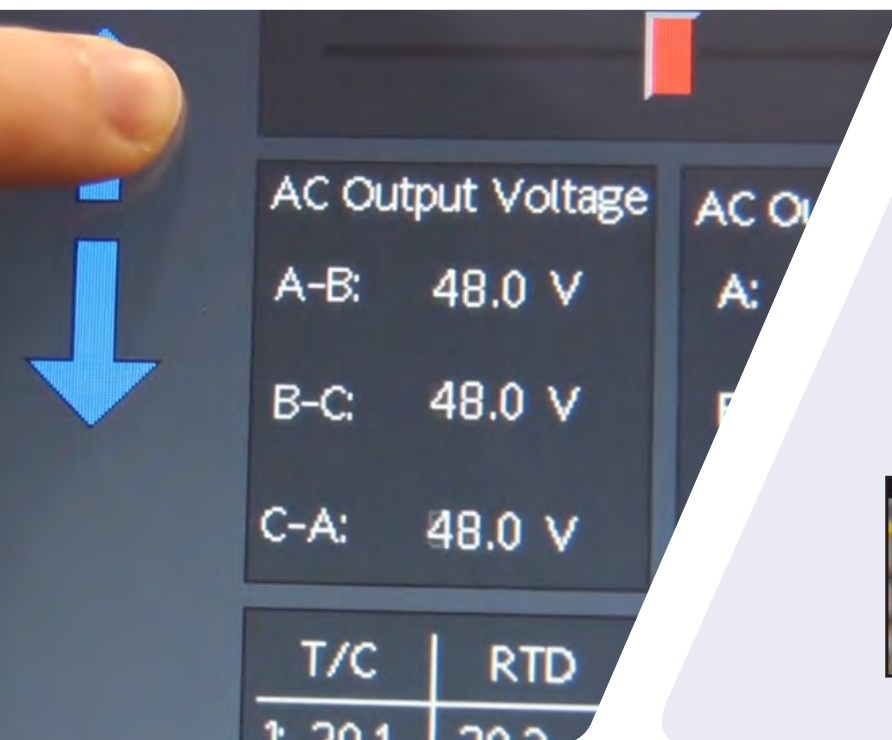
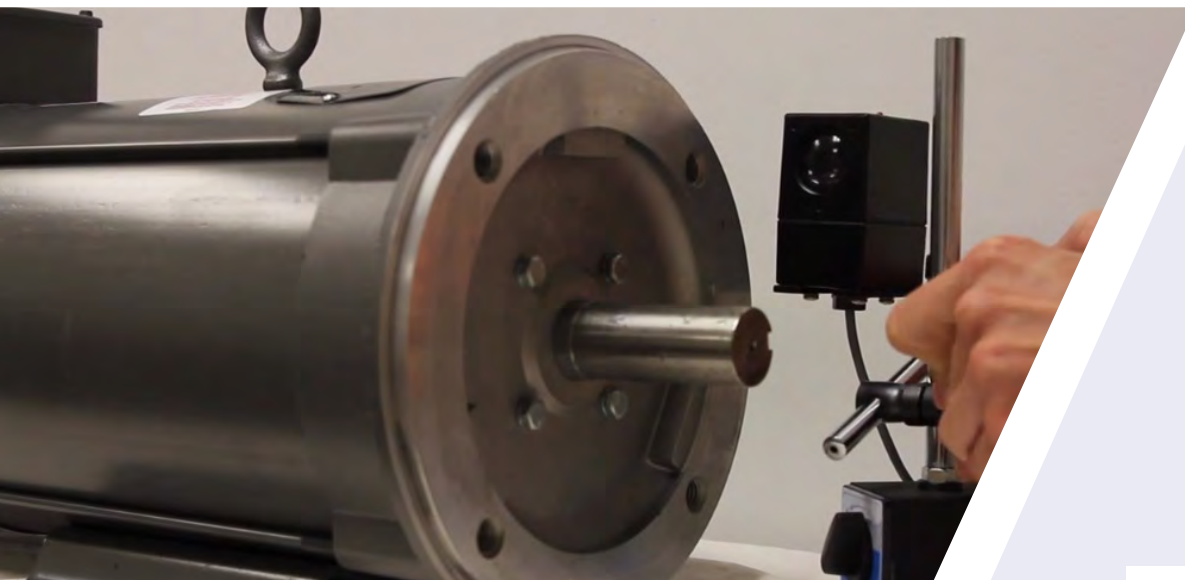
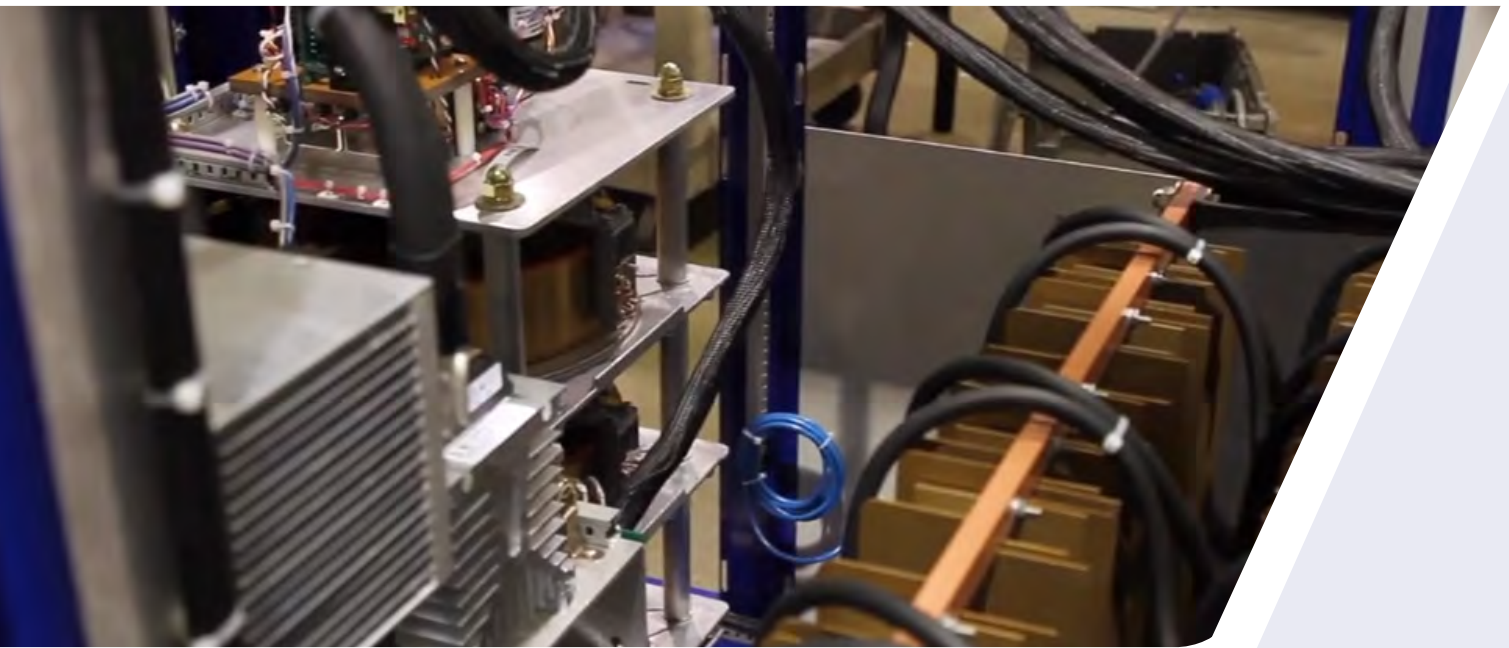
Below is a list of optional equipment available a la carte.

- RTD temperature measurement input
- Boom arm output
- Impedance supply
- Vibration analyzer
- Additional voltage taps
- Optional series field supply
- Input voltage and current meters

We are a proud member of The Electrical Apparatus Service Association (EASA). EASA provides members with a means of keeping up to date on materials, equipment, and state-of-the-art technology.







***Watch our Motor Test System video for a product overview and live demonstration.***



## RELATED PRODUCTS



The **700 Series AC dielectric test systems** are designed to perform high voltage AC tests on electrical apparatus in accordance with several national test standards.



The combination of the high power and low PD level **MIDAS 2881/2881G** with a PD detector **DDX9121b** allows simultaneous partial discharge and dissipation factor testing on rotating machines, reducing the measurement time drastically. Together with the resonating inductor option it is possible to perform PD and Dissipation Factor (DF) measurements up to 15 kV, 100 kVA.



The **800PL Series of DIGITAL DC Hipot testers** is an economical solution to DC field testing of cables and other electrical apparatus. All models are self-contained in a rugged and durable enclosure.



The **5478 portable teraohmmeter** is a multipurpose digital tester intended for analyzing, inspecting and maintaining any high voltage insulations.



The **2293 winding resistance meter** is a unique instrument capable of handling even the toughest resistance measurement applications.





#### OFFICES:

##### Europe

Haefely Test AG  
Birsstrasse 300  
4052 Basel  
Switzerland

☎ + 41 61 373 4111  
☎ + 41 61 373 4912  
✉ sales@haefely.com

##### China

Haefely Test AG Representative Beijing Office  
8-1-602, Fortune Street  
No. 67, Chaoyang Road, Chaoyang District  
Beijing, China 100025

☎ +86 10 8578 8099  
☎ +86 10 8578 9908  
✉ sales@haefely.com.cn

##### North America

Hipotronics, Inc.  
1650 Route 22 N  
Brewster, NY 10509  
United States

☎ +1 845 279 3644  
☎ +1 845 279 2467  
✉ sales@hipotronics.com